

# STEELTEC

WELDING & CONTRACTING



## Steeltec Welding and Contracting

Steeltec, the latest division of The Bucket Shop, incorporates our Millwrights, Field Welders, c/w Welding Rigs, and our 28-foot Tilt & Load Heavy Hauler.

Jim Mask who brings over 25 years of hands on experience, heads up the Timmins Field Division and Don Lamontagne heads up the Northern Division. As a customer it means solutions to all of your maintenance problems.

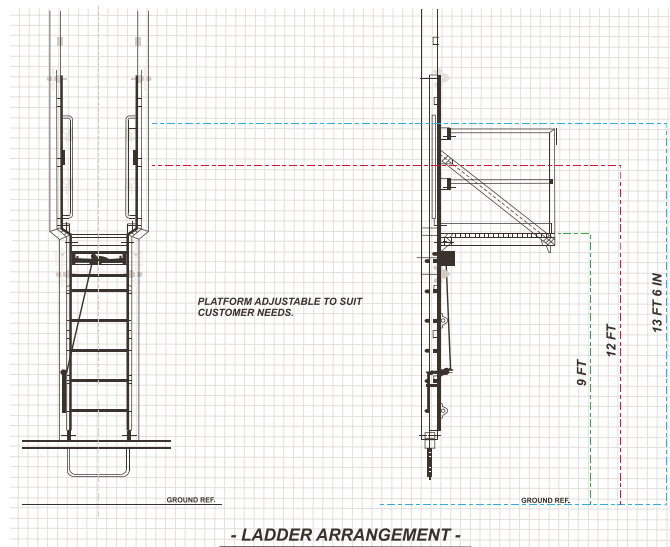
- Steeltec offers a fully trained and dedicated field division equipped for all site requirements.
- Our full time staff includes a full line of Welders, Industrial Mechanics, Riggers, Labourers, Machinists and Millwrights.
- Our staff is fully trained in W.H.I.M.I.S, T.D.G, First Aid and CPR.
- We have seven fully equipped welding rigs that also have on line air for remote arc air and air tool operation. Several rigs are equipped with hydraulic hoists while all units contain portable wire feeders.
- The field team has extensive experience in the mining industry ranging from underground crushers, ore bins, liner change outs, piping jobs, platform hand railing, monorail fabrication and installation. Concrete work and pump base constructions as well as a variety of mechanical skills are available.
- Equipment failure due to worn out bores can be costly in a number of ways, equipment down time, lost productivity, and the cost of the repairs themselves. That was the past, fortunately the present has provided us with the means to remedy the problem quickly and effectively. Steeltec has 3 complete portable line bore units (complete buildup and material removal capabilities) available which can come directly to your job site to complete the repairs in a timely manner to save you money and get your equipment up and running again. From buckets, loader arms and pivot points, to excavator sticks, no job is too big or too small.
- Regularly our field team is involved in the Sawmill, OSB Plant and Mining Industries. Our crew has worked extensively around woodroom conveyance systems, bearing debarkers and is adaptable to other areas of work as may be required.

# STEELTEC

WELDING & CONTRACTING



- We have also done extensive repairs to CAT 785B haulage trucks, P&H 2300 shovels for open pit mining and particularly extensive repairs on mining mill scheduled and emergency shut downs.
- Steeltec has a fully equipped Pipe Fabrication and Grooving Shop dedicated specifically to industrial piping requirements. Our shop can work with piping up to and including 24" on all cut and roll groove requirements. Galvanizing is also available. Our pipe division offers cost effective, cost cutting pipe wear solutions for all you high wear areas, where by our Field Team is fully mobile and can work with your prerequisites in regards to the removal or installation of your piping needs.
- Our field division is completely backed by our shop facilities and capabilities. All crew are available for out of town work as well as remote areas if requested by our customers.
- Field personnel are equipped with 2 way radios and for remote job sites we have satellite communication to enable crew to be in contact with both the customer and home base.



The Fall Arrest System is manufactured on receipt of order and is shipped 100% ready to assemble including all hardware and steel members. An experienced technician is available to assist in assembling the Fall Arrest System.